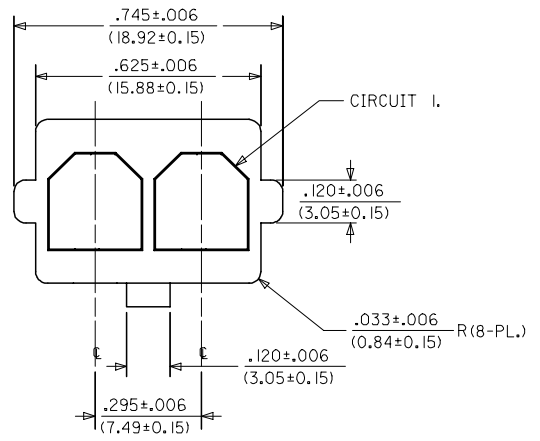


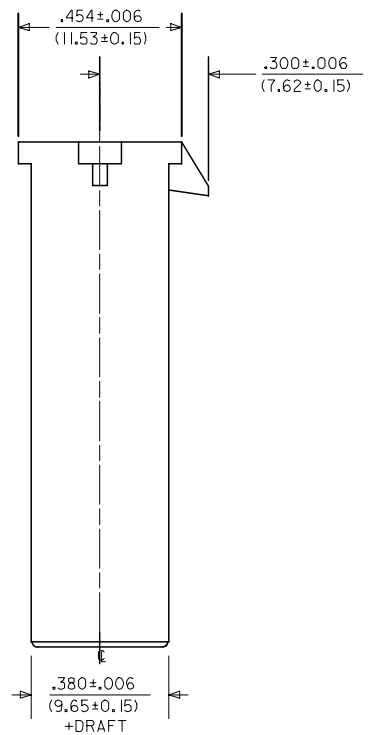
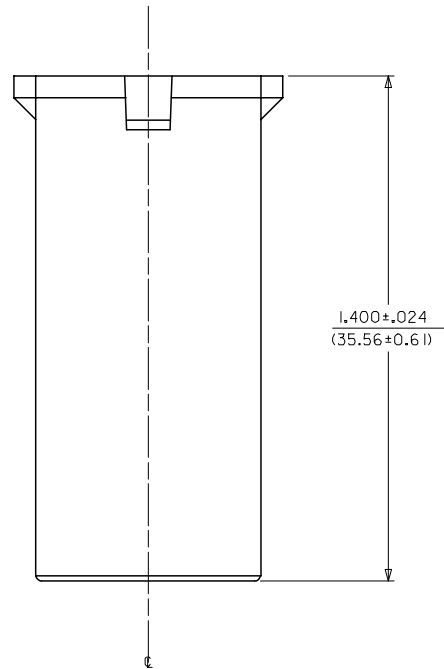
13 12 11 10 9 8 7 6 5 4 3 2 1

ITEM NUMBER	MATERIAL	COLOR
43680-2002	UL94V-0 NYLON	BLACK
43680-1002	UL94V-2 NYLON	NATURAL (TRANSLUCENT)

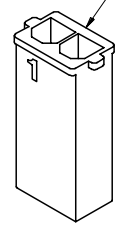


**NOTES:**

1. MATERIAL: SEE CHART.
2. FINISH: NONE.
3. PRODUCT SPECIFICATION: PSX-44441-9999.
4. PACKAGING: PK-43680-001.
5. THIS CONNECTOR HOUSING FOR USE WITH 43178-\*\*\*\* TERMINALS.
6. THIS CONNECTOR HOUSING WILL MATE TO 43335-\*\*\*\*, 43179-\*\*\*\* AND 44441-\*\*\*\* HOUSINGS.
7. PARTS CONFORM TO CLASS B REQUIREMENTS OF COSMETIC SPEC PS-45499-002.



LOCKING NUB IS LOCATED HERE



43680-002  
(NO SCALE)

ADD NOTES 2 & 7 EC NO: UCP2008-0911 DRAWN/PRD/DR 2007/11/15 CHKD:LS/HMT 2007/11/16 APPR:FSM/TH 2007/11/16 REV	QUALITY SYMBOLS	GENERAL TOLERANCES (UNLESS SPECIFIED)	DIMENSION STYLE	SCALE	DESIGN UNITS	THIRD ANGLE PROJECTION
	▽=0 ▽=0	mm INCH 4 PLACES ± --- ± --- 3 PLACES ± --- ± .010 2 PLACES ± 0.25 ± .014 1 PLACE ± 0.35 ± --- ANGULAR ±1/2°	IN/MM DRAWN BY DATE CM 03/22/1996 CHECKED BY DATE KBP 03/22/1998 APPROVED BY DATE RAS 03/22/1998	4:1	INCH	☉ □ THIRD ANGLE PROJECTION
	DRAFT WHERE APPLICABLE MUST REMAIN WITHIN DIMENSIONS	SEE CHART	MATERIAL NO.	DOCUMENT NO.	SHEET NO.	
					1 OF 1	

TITLE 2-CIR. PLUG HOUSING .125/(3.18)X.020(1.51) SABRE - TPA	
MOLEX INCORPORATED	
MATERIAL NO. SD-43680-002	SHEET NO. 1 OF 1
THIS DRAWING CONTAINS INFORMATION THAT IS PROPRIETARY TO MOLEX INCORPORATED AND SHOULD NOT BE USED WITHOUT WRITTEN PERMISSION	

12 11 10 9 8 7 6 5 4 3 2 1